

# 5. BAYHOST-Donauforum hochschule dual international

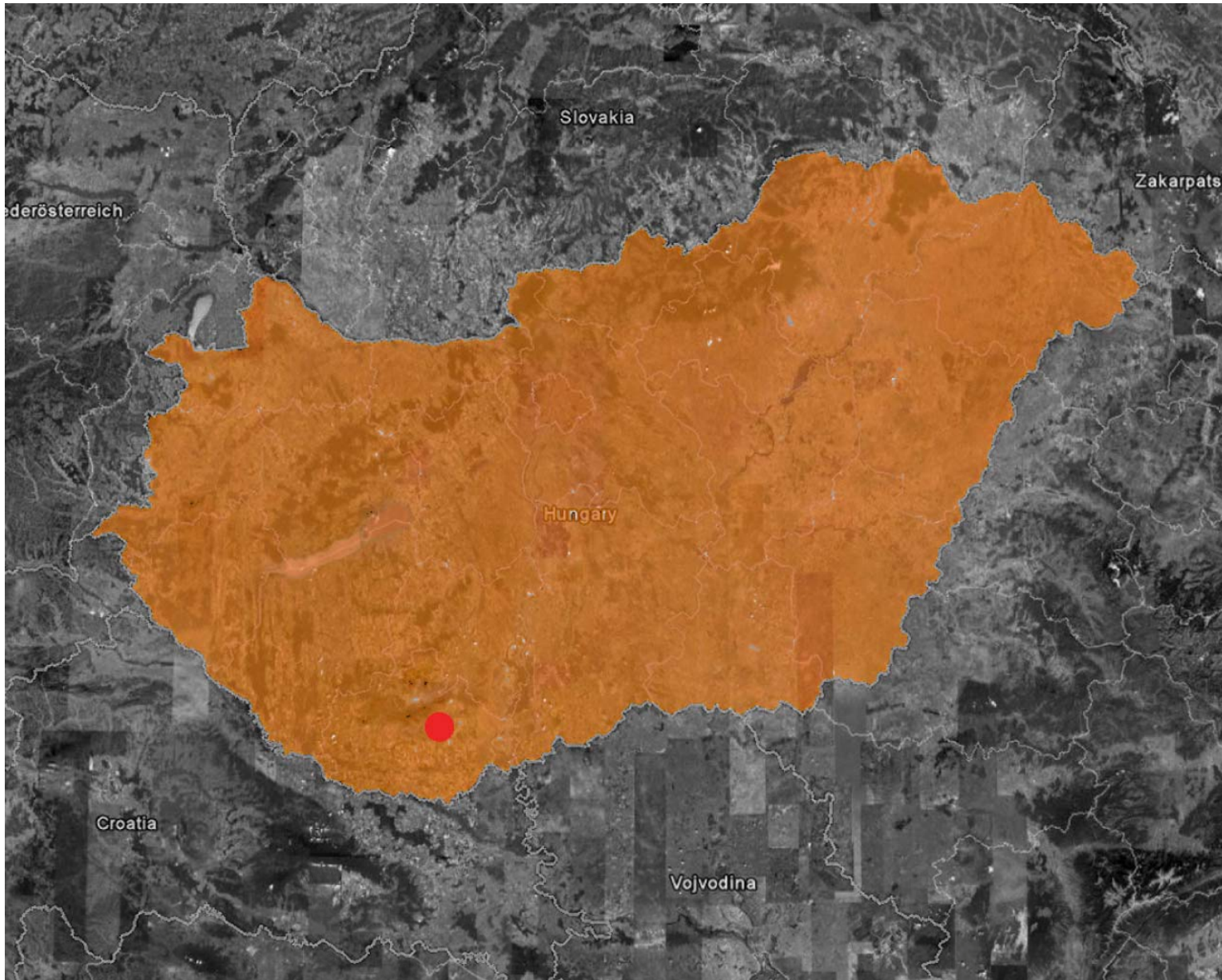
18. bis 19. September 2014, Technische Hochschule Ingolstadt

## DUAL PROGRAMME In HUNGARY

Dr. Bálint Bachmann, Dean

Pollack Mihály Faculty of Engineering and IT, University of Pécs





PÉCS , HUNGARY





PÉCS – historic city from the middleage



PÉCS – historic city centre

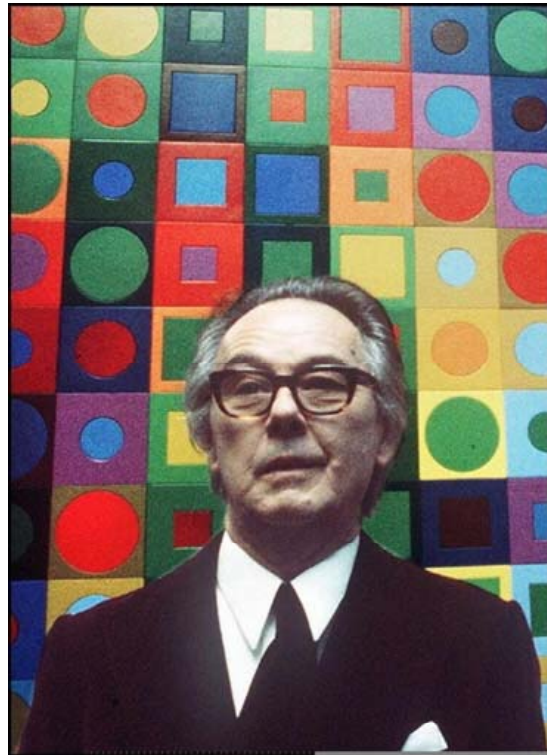




UNESCO WORLD HERITAGE SITE – EARLY-CHRISTIAN CEMETERY, 4th Century A.D.  
PÉCS – SOPIANAE, HUNGARY – PANNONIA



Marcel BREUER



Victor VASARELY



Vilmos ZSOLNAY

# University of Pécs (PTE) with 21.000 Students in 10 Faculties:

Medicine

Health Sciences

Business and Economics

Natural Sciences

Humanities

Law

Engineering and Information Technology (POLLACK)

Arts and Letters

Adult Education and Human Resources

Teacher Education in Szekszárd

24 Clinics of Medical Disciplines





UNIVERSITY OF PÉCS  
POLLACK MIHÁLY FACULTY OF ENGINEERING AND IT



## Courses at Pollack

### **Bachelor courses in 2010:**

Architecture BSc

Art in Architecture BA

Civil Engineering BSc

IT for Engineering BSc

Mechanical Engineering BSc

Electrical Engineering BSc

Industrial Design BSc

Environment Engineering BSc

Pedagogy for Engineering BSc



## **Courses at Pollack**

### **Master courses in 2010:**

Structural Architecture MSc

Planning Architecture MSc

Urbanism MSc

Pedagogy for Engineering MA

Civil Engineering MSc

Architecture MSc (10 Semesters undivided)

### **Master course from 2011:**

Art in Architecture MA

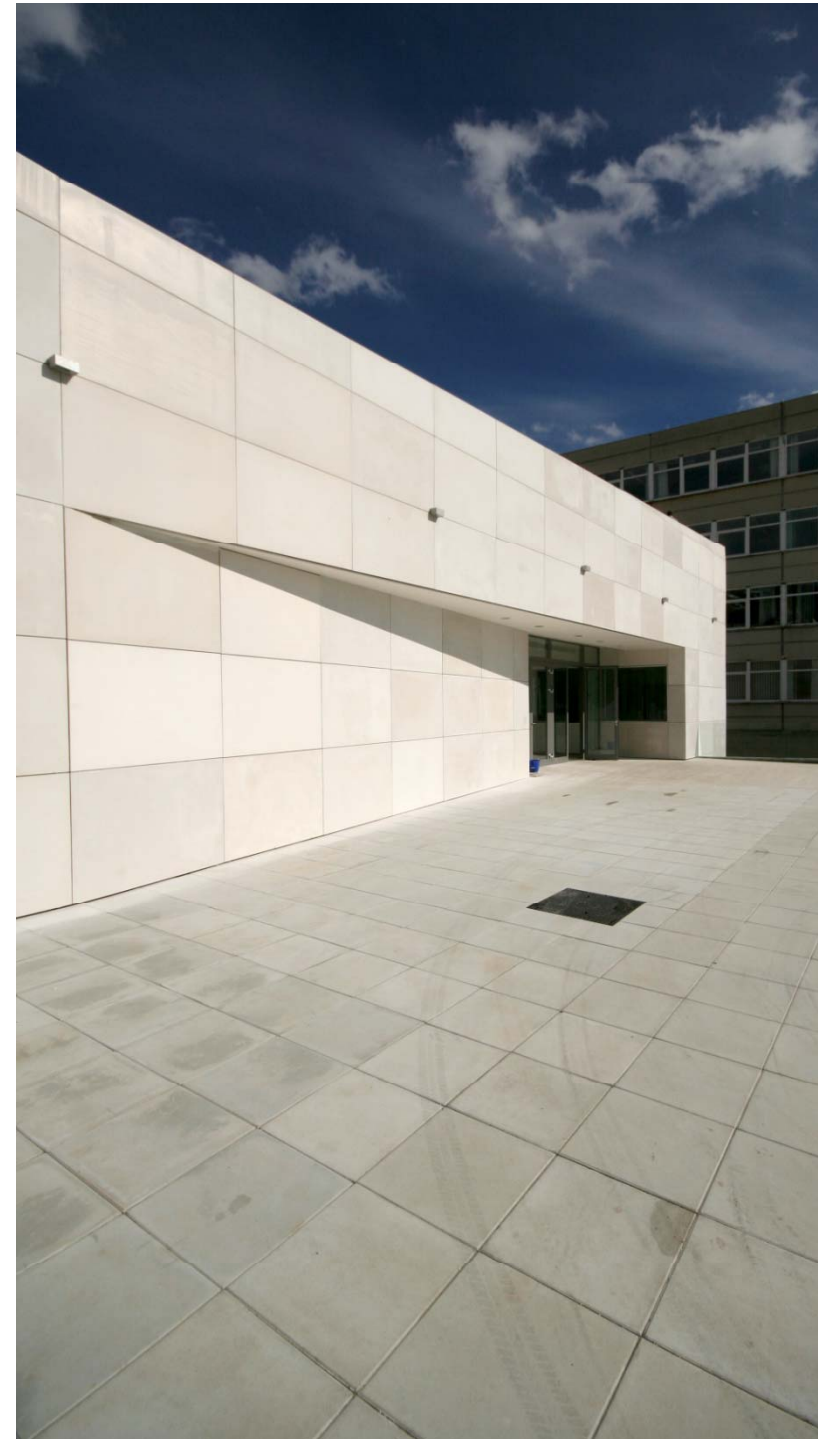
### **BSc course from 2012:**

Infrastructure Civil Engineering BSc

### **Master course from 2013:**

IT for Engineering MSc

Interior Design MA

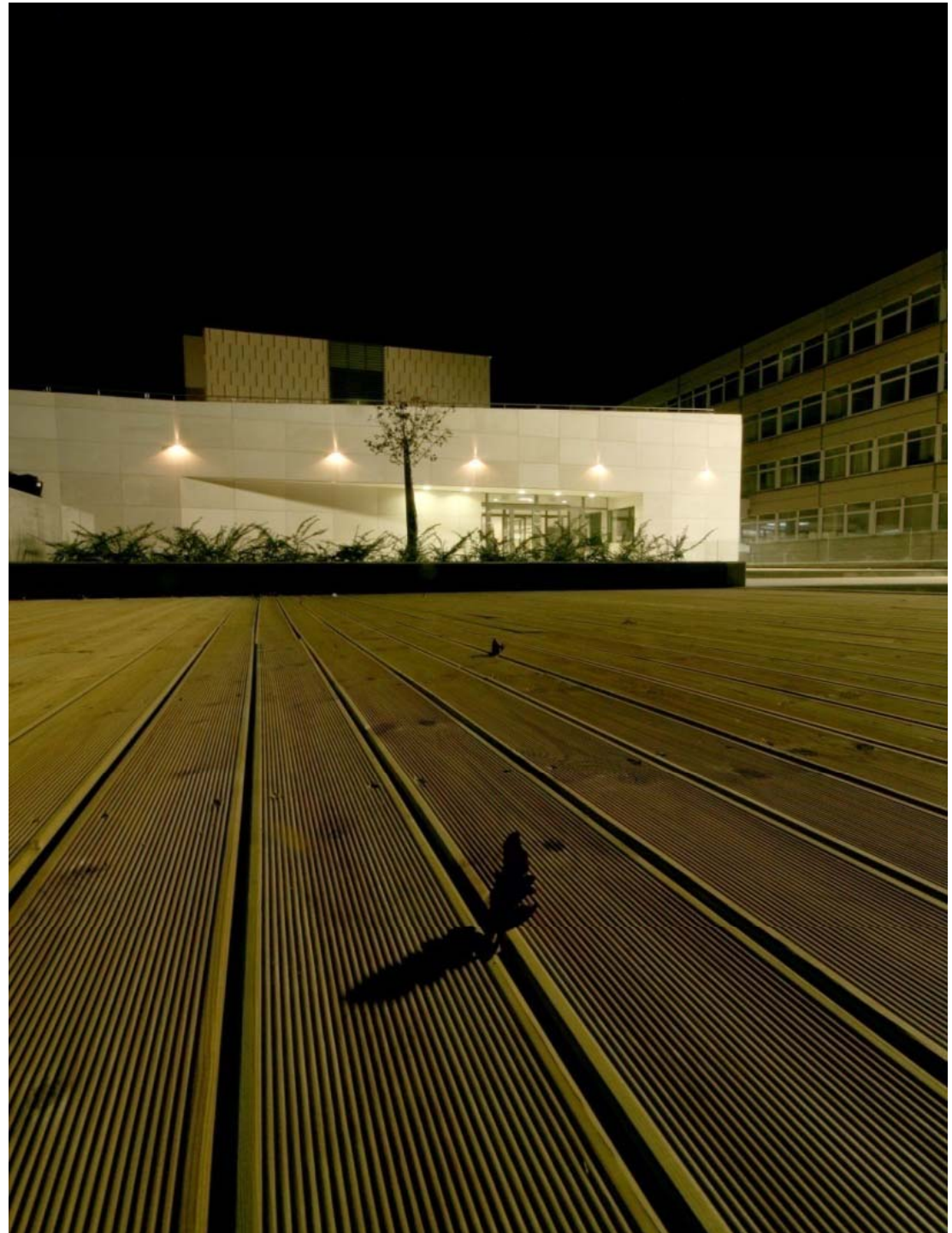




## Doctoral courses

### Marcel Breuer Doctoral School

- Engineering in Architecture PhD
- Art in Architecture DLA



# Number of Students of Engineering 2014

Students BSc/MSc/PhD/DLA	2588
Students in Distance Learning	324
<b>All Students</b>	<b>2912</b>

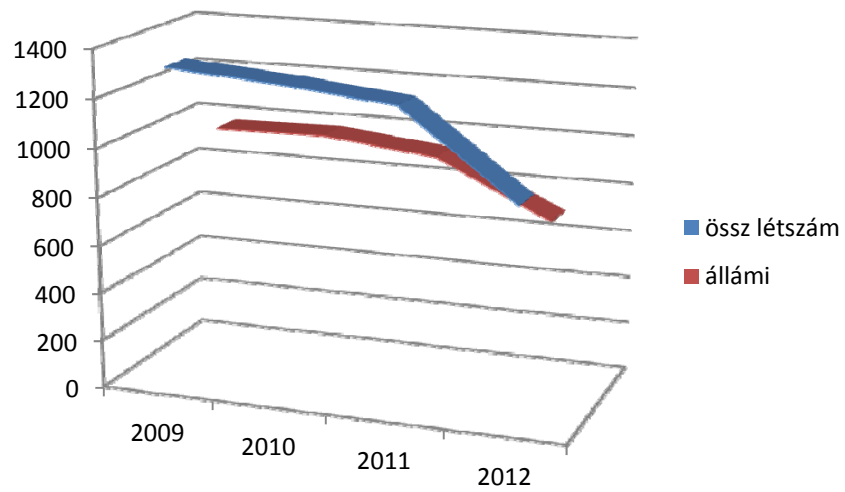




Number of Students: 2912

Number of Students with :2509

Trends of Number of Students of Engineering and IT:



### Pécsi Tudományegyetem

	Állami támogatás (eFt)	Csökkenés előző évhez képest (eFt)
2008.12.31	20 288 805	
2009.12.31	18 014 388	-2 274 417
2010.12.31	17 812 627	-201 761
2011.12.31	16 855 320	-957 307
2012.12.31	16 276 501	-578 819
2013.01.01	10 799 800	-5 476 701
<b>Támogatás csökkenés összesen</b>		<b>-9 489 005</b>

### Szegedi Tudományegyetem

	Állami támogatás (eFt)	Csökkenés előző évhez képest (eFt)
2008.	19 248 253	
2009.	18 995 442	-252 811
2010.	18 668 509	-326 933
2011.	19 683 184	1 014 675
2012.	16 688 100	-2 995 084
2013.	12 434 300	-4 253 800
<b>Támogatás csökkenés összesen</b>		<b>-6 813 953</b>



# PTE Pollack entrance statistics 2013 and 2014

2013 Number of Registrations compared to 2012:

**-27%**

2014 Number of Registrations compared to 2013:

**-21%**

1st Place Registrations compared to 2012:

**-21%**

1st Place Registrations compared to 2013:

**-2%**

- POLLACK is ranked **7th** by the Employers among 29 HEI of Engineering in Hungary.
- Student Service of POLLACK is ranked **8th** by the Students among 29 HEI of Engineering in Hungary.

(HVG Diploma 2013)

## **Dual programme in the Hungarian higher-education:**

The latest modification of national higher-education regulation (2011.CCIV.Nftv/2014.XXXVI.) provides the possibility for dual programme also since the 24. July of 2014.

The dual programme works under the supervision of the Dual Programming Council according to defined and qualified organizations.

But, in reality:

The Dual Programming Council is not established yet. Whereas the dual programme's scope is supposed to be defined by the Council, there is no sense of talking about the dual programme (according to law).

At present, the programme is a professional practice still.





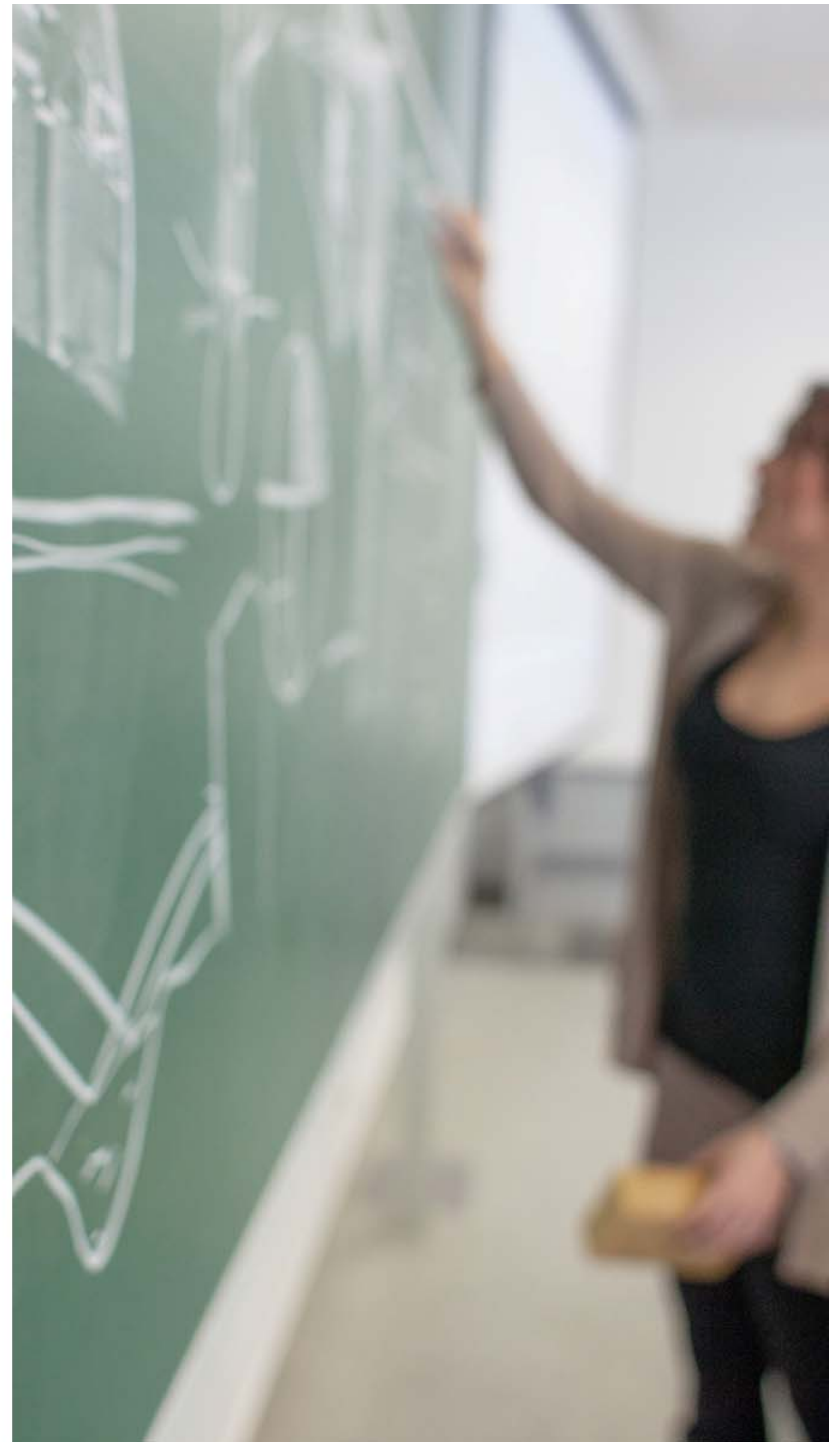
## What does dual programme mean?

The concept of dual programming (according to the regulation 2011.CCIV, 108. § ):

The dual programming:

it is an educational form, starting its programme at the level of the sophisticated-practical Bachelor- and Master-degree, on the field of the technics, informatics, agriculture or economics.

Through the education programme, according to the degrees and the output requirements **the dual programme works under the supervision of the Dual Programming Council according to defined and qualified organizations.**



## Establishment of dual programmes:

### Cycles of the programme:

The programme is relevant to all cycles of higher-educational or doctoral level.

### Primary establishment cycles:

Undergraduate educational programmes,  
Bachelor (BSc) programmes

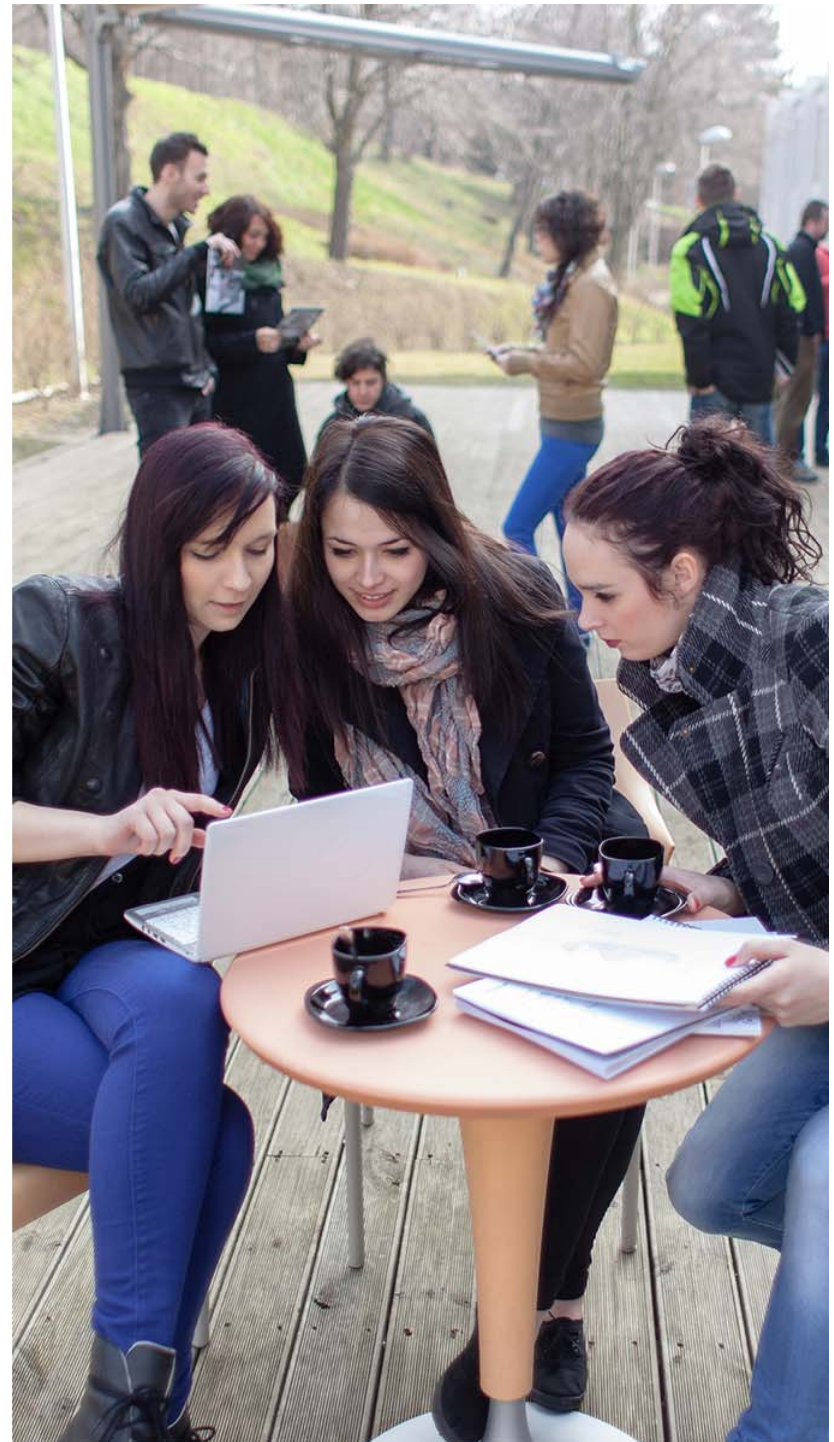
### Schedule:

The dual programme exists only in regular schedule, for the reason of its need for concentrated contact-classes (no distance learning is allowed).



## The fields of practical programme can be:

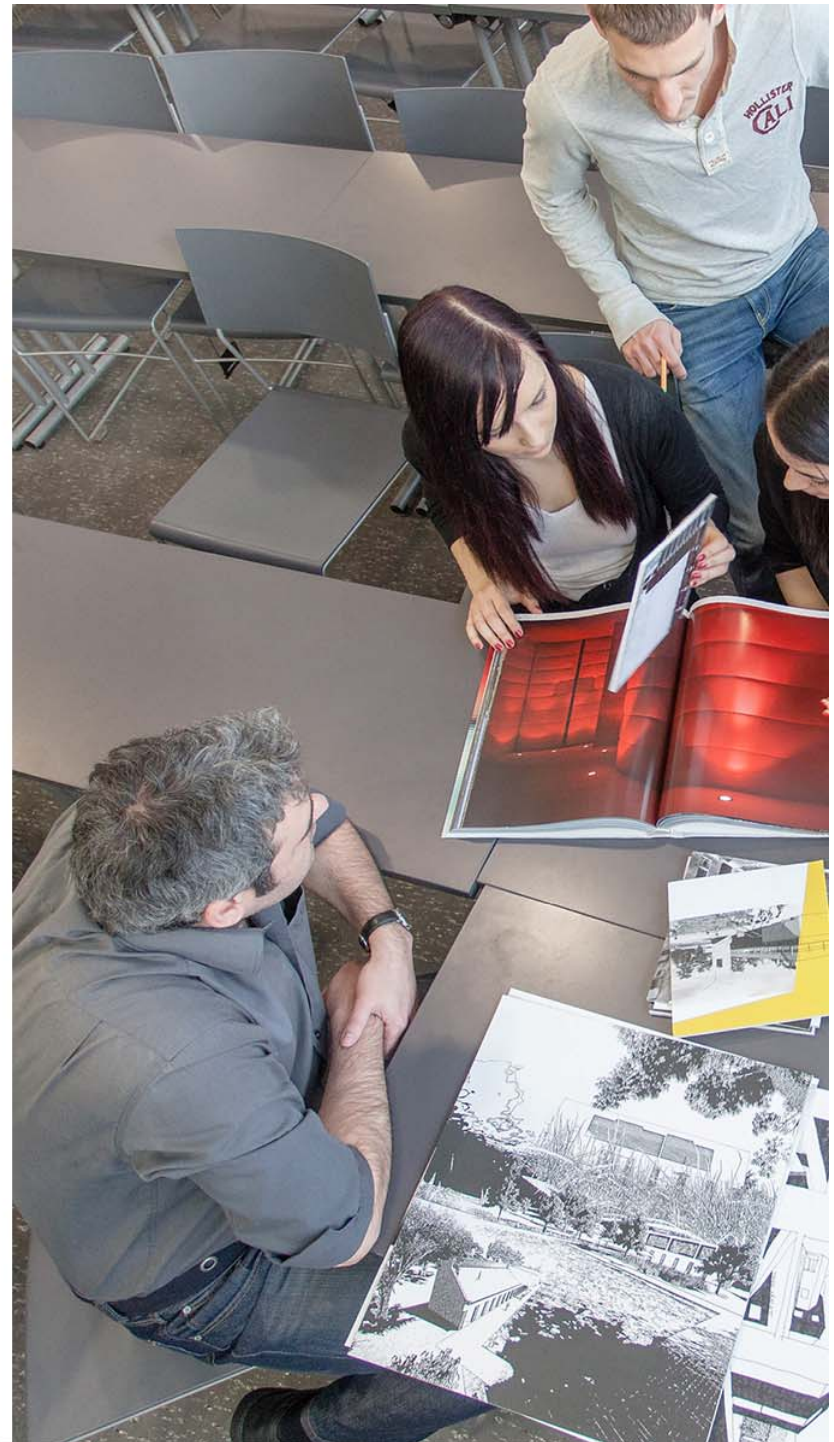
- The obligatory professional practice during the studies
- Practical, small-group classes in higher-education programme
- Classes at accredited (qualified) commercial entity





## Criteria for commercial entity participating in the dual programme:

- The higher-educational institute cooperates with its industrial partner about the programme-plan and provides its continuity and the evaluation of students
- The industrial partner is responsible for the administrative and coordinative tasks, and for the replacement of teachers, if needed so.
- The practical areas must provide all means of work- and health-protection and the availability for proper tools, devices, computers and professional educational materials.



## Advantages of dual programme:

### From the point of students

- Aquaintance of professional practice
- Student's contract of work means income during the studies
- More possible jobs in the future

### From the point of commercial entity:

- Continuity of labour market
- Heritage of the special knowledge, even through the gradual programme
- Apply for financial sources from the State (approx. 1500Euro)

### From the point of higher-education institutes:

- Increasing number of applicants
- Innovation of the programme
- Developing business connections



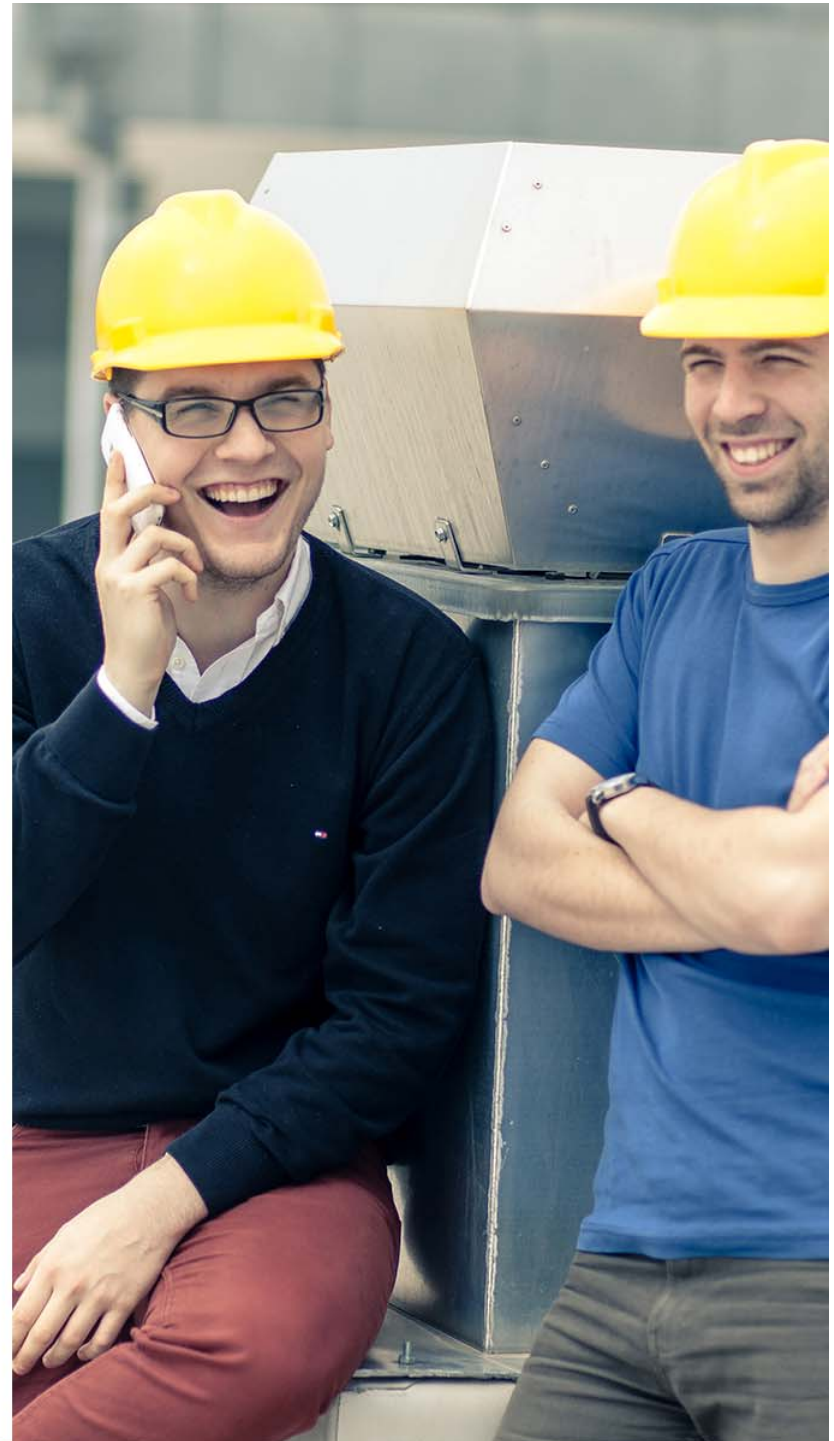
## Dual programmes at Pollack:

Existing cooperative contracts for practice-orientated dual-like mechanical-engineering, BSc-programme students:

- 10 companies (eg: Hauni Hungária Kft., Strauss Metal Kft.)
- Practice-orientated programme for 35 students is provided

The point of the contract is: students ,build bridges' in between their theoretical and practical knowledge, they develop their professional competences

Students participating the dual programme are selected by the Faculty and commercial entities through an entry-exam





## Dual programmes at Pollack:

Fields of professions participating:

- Mechanical Engineering Bscprogramme  
(ongoing with 35 Students at 10 Companies)
- Informatics IT Engineering BSc and MSc programmes  
(cooperative contracts are under preparation)
- Electrical Engineering BsC programme  
(still negotiating with commercial entities)
- Environmental Engineering BsC programme
- Civil Engineering BSc programme
- Architecture BSc programme



## Steps onto Dual Programmes:

The introduction of dual education might increase the attractiveness of engineering studies for young people.

The requirements for the undergraduated, partly equal to the engineering graduated:

- ability for practical application of modern technology,
- practical experience with diverse design methods,
- capability of technical verbal- and media-communication.



## Further Steps to Dual Programmes:

-developing a map of students' competences for the companies to learn more about the content of the theoretical and practical education at the HEI. This can help to find the proper method of dual education provided by the company.

-setting up a career model for engineers aiming the popularity of the profession by following young people from primary school through secondary school till their higher education and finally entering the labour market,

-providing information for secondary schools to make dual programmes attractive for their graduates,

-legal and financial support of education policy.





THANK YOU FOR YOUR ATTENTION

Pécsi Tudományegyetem  
Műszaki és Informatikai Kara

a Pollack